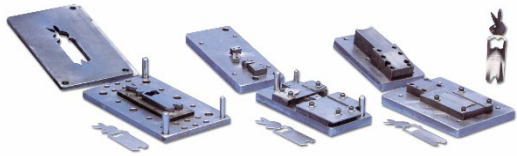




A trusted partner for high-quality  
precision metal stampings and  
assemblies since 1942



AS9100 Aerospace &  
Defense Certification

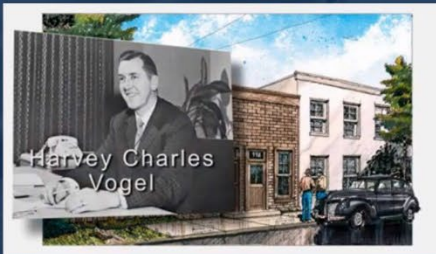
ISO 9001 Quality  
Management Certification

ISO 14001 Environmental  
Management Certification



## Who We Are

- Founded in 1942, we are a global supplier of precision metal stampings, fabrications & assemblies
- With over 84 years of experience, we specialize in the most challenging, tight-tolerance, and appearance focused custom parts
- Our capabilities include value-added services through complete assembly and finishing
- Our expertise is short-run complex metal stamping
- Work Envelope: 36" x 72" to less than 0.5" x 0.5"
- Alloys Used: Steel, Aluminum, Stainless Steel, & Red or Yellow Metals





As a leader in metal stampings & assemblies we continuously invest in our talent, facilities, and equipment to ensure we provide the most innovative solutions in the industry.

## Facilities & Equipment

- Two state-of-the-art facilities within the twin cities featuring over 200,000 square feet. Woodbury & Eagan, Minnesota
- 250 Employees, multiple work shift options, and 24/7 lights out production capabilities
- Our fully equipped facilities include:
  - ✓ In-House Tool & Die Service
  - ✓ Over 200 stamping presses from 10 to 400 tons
  - ✓ 15 Press Brakes
  - ✓ 12 CNC Machining Centers
  - ✓ 4 Complete Laser Cutting Systems
  - ✓ 2 Hydraulic Presses
  - ✓ Waterjet Cutting
  - ✓ Robotic Welding
  - ✓ Advanced Quality Inspection Equipment
  - ✓ In-House Performance Powder Coating

***Laser Turret Combo***  
*Coming in March!*



# THE HARVEY VOGEL ADVANTAGE

Serving a Wide Range of Industries

## PROCESSES:

Design Assistance | Prototype | FAI / LRIP | Production | Managed Inventory

## SERVICES:

Engineering

Managed  
Outside Processes

Program  
Management

Inventory  
Management

ITAR/AS/ISO  
Compliance

## CAPABILITIES:

### Prototype

- Fiber Optic Laser Cutting
- Turret Punching
- Press Brake Forming

### Fabrication

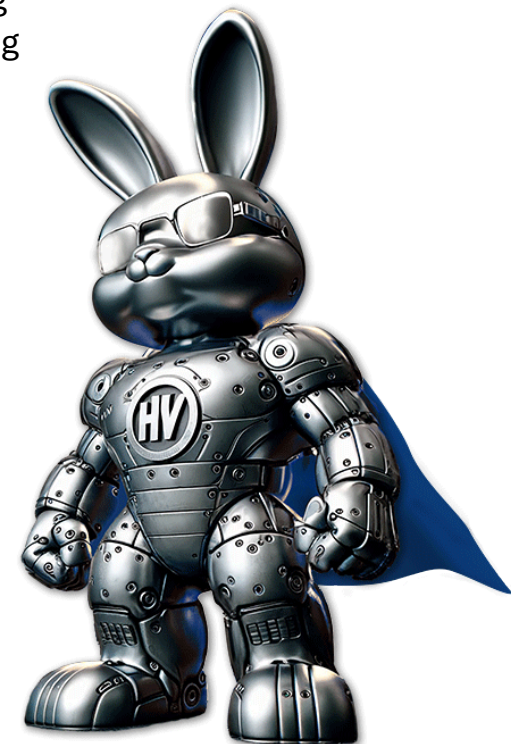
- CNC Machining
- Turret Punch Presses
- Press Brake Forming
- Wire EDM's
- Welding: MIG, TIG, Arc, Spot, Robotic
- Waterjet Cutting
- Laser Turret Combo *Coming In March!*

### Stamping

- 200+ Presses, 10 to 400 Ton
- Short Run Stage Tool Stamping
- Long Run Progressive Stamping
- In-House Tool & Die Service

### Complex Assembly & Value Add

- Assembly & Hardware
- Leveling, Grinding, Sanding
- Deburring & Cleaning
- Laser Etch
- In-House Powder Coating
- Managed Outside Finishes



## VALUE:

Supply Base | Time to Market | Lead-Time | Risk | Total Cost



# GLOBAL SALES PERFORMANCE & FUTURE TRENDS

## Sales History



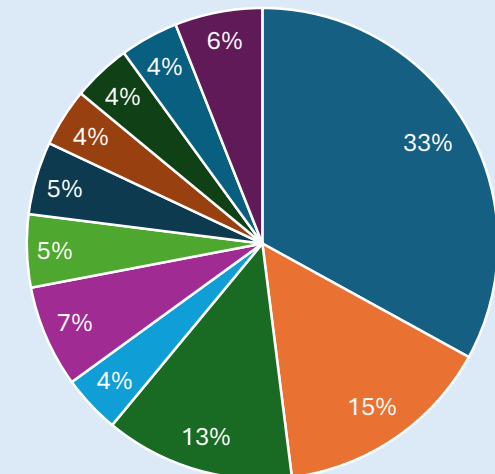
2026 Sales Projection: \$50 Million



## 2025 Sales by Market



2026 Market Growth: Robotics, Military, Renewable Energy



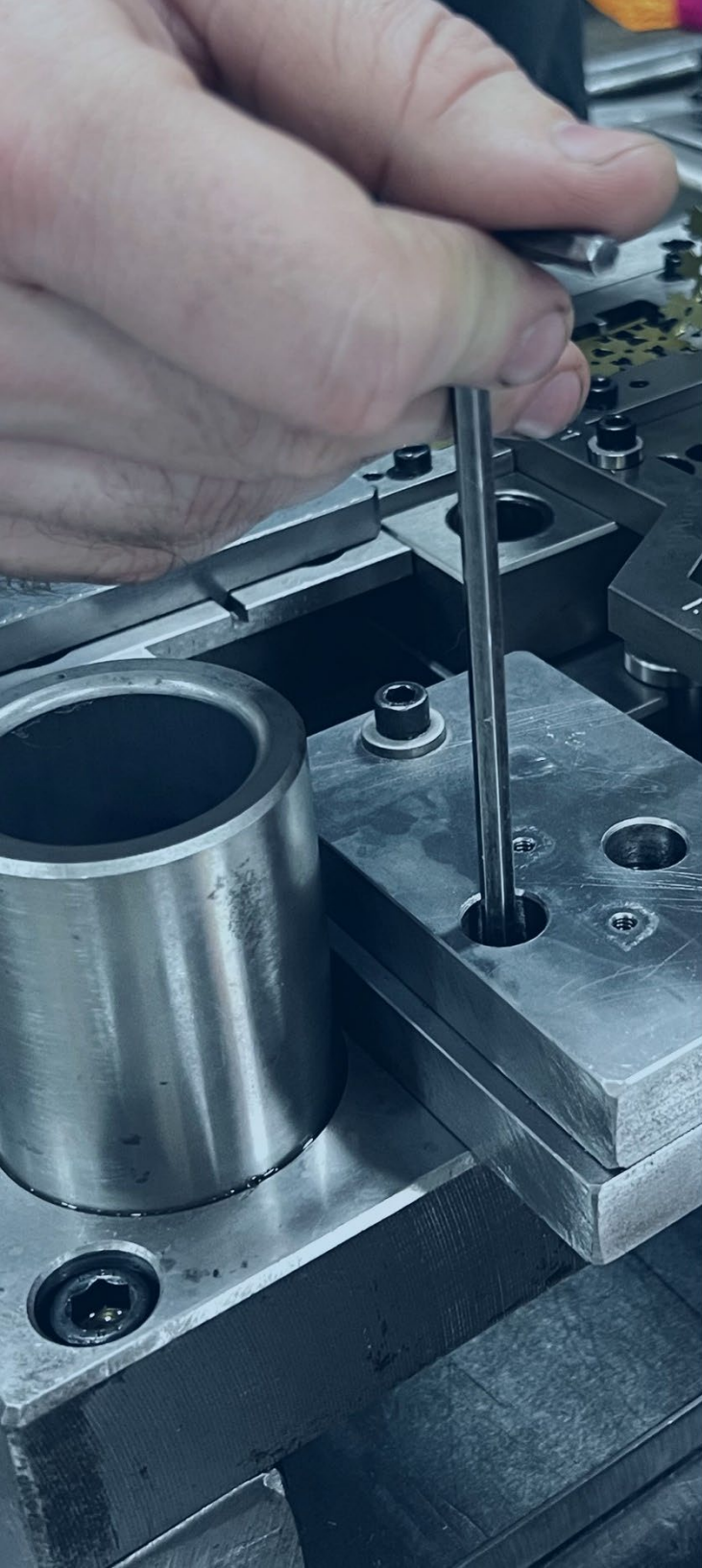
# U.S. & WORLDWIDE CUSTOMERS

Customer Satisfaction Propels Us Forward



Pall Corporation





## Industries Served

Utilizing the most current technologies, forming techniques, and quality assurance programs to achieve exact design specifications and tolerance requirements for many industries including:

- ✓ Aerospace
- ✓ Agricultural
- ✓ Automotive (3<sup>rd</sup> Tier)
- ✓ Banking
- ✓ Computer & Telecom
- ✓ Consumer Goods
- ✓ Contract Manufacturing
- ✓ Data Storage
- ✓ Electronics & Electrical
- ✓ Fitness Equipment
- ✓ Food & Bev Equipment
- ✓ Gaming & Entertainment
- ✓ Industrial Automation
- ✓ Lawn & Garden
- ✓ Lighting
- ✓ Marine & Watercraft
- ✓ Medical & Healthcare
- ✓ Military & Defense
- ✓ Networking / Infrastructure
- ✓ Process Controls
- ✓ Recreational Equipment
- ✓ Renewable Energy
- ✓ Robotics
- ✓ Small Engine
- ✓ Transportation and others...

**Full-Service Manufacturing Saves Time, Money,  
and Results In a More Complete Component**



## Quality

- World Class PPM
- AS9100 Certification
- ISO 9001 Certification
- ISO 14001 Certification
- Advanced Inspection Equipment
- Clean, Climate Controlled Facilities



## Value-Added

- Tooling Service & Maintenance
- Complex BOM & Assembly
- Laser Etch Capabilities
- Vendor Managed Inventory
- In-House Powder Coating
- Supply Chain Management



**h**  
**DELIVERS  
MAXIMUM  
VALUE**



## Capabilities

- Rapid Prototyping
- Laser Cutting & Fabrication
- Short Run & Progressive Stamping
- Hardware & Complex Assembly
- Specialized Processes & Packaging
- Powder Coat Painting



## Lean Culture

- Automation & Robotics
- Streamlined Operations
- Cellular Manufacturing
- Continuous Improvement Initiative
- Forward-thinking Talent, Facilities & Equipment Planning





## Services Overview

- AS & ISO Certified Quality System
- Value Analysis / Value Engineering (VA/VE)
- Prototype Work Cell
- Tool Design & Production
- Laser Cutting
- Stage Tool Stamping
- Progressive Stamping
- Fabrication & Forming
- Laser Etching
- Powder Coat Painting
- Assembly
- Kitting
- Inventory Management



Your Full-Service Metal Manufacturing Supplier  
For Precision Stampings & Assemblies

# STRATEGIC VALUES & BUSINESS METHODOLOGIES

**Our quality certifications and business direction support our commitment to precision metal stampings & assemblies.**

## 2025 Business Initiative Results:

Continuous Improvement Teams	4
Performance Improvement Teams	10
Manufacturing Improvement Teams	23
5S Initiatives	253
Approved Employee Suggestions	43
Identified & Executed Improvements	406
Saved in Annualized Improvements	= \$576K
<b>ISO 14001 Environmental Management System (EMS)</b>	
<b>Clean, Organized &amp; Safe Work Environment</b>	

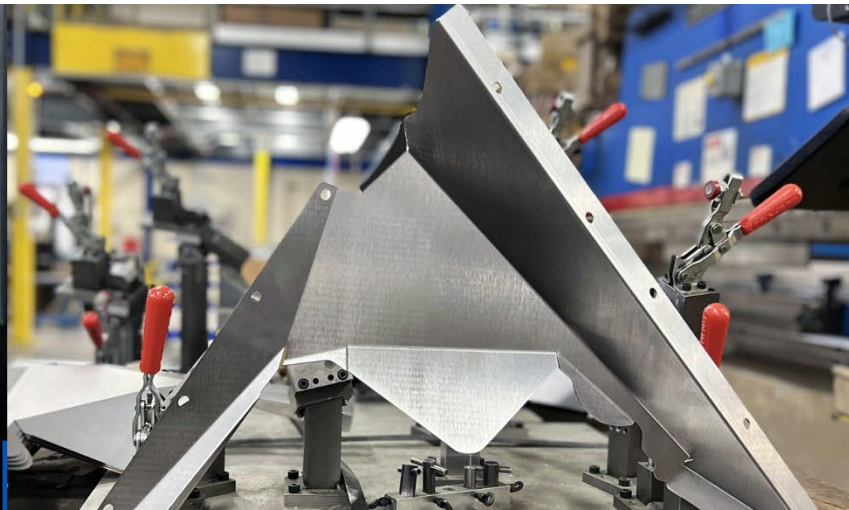




## Standout Advantages:

- Global supplier for the most complex stamping & assemblies
- Stage tool expertise for short to medium run metal stampings
- Specialize in “High-Appearance” part requirements
- Strong customer focus and knowledge
- Commitment to quality assurance & customer satisfaction
- State-of-the-art facilities, equipment, and technology
- Multiple manufacturing locations
- Project management excellence
- Vertical integration
- In-House powder coat painting
- Vendor managed inventory

"Harvey Vogel routinely produces metal stampings other stampers cannot attempt to manufacture."



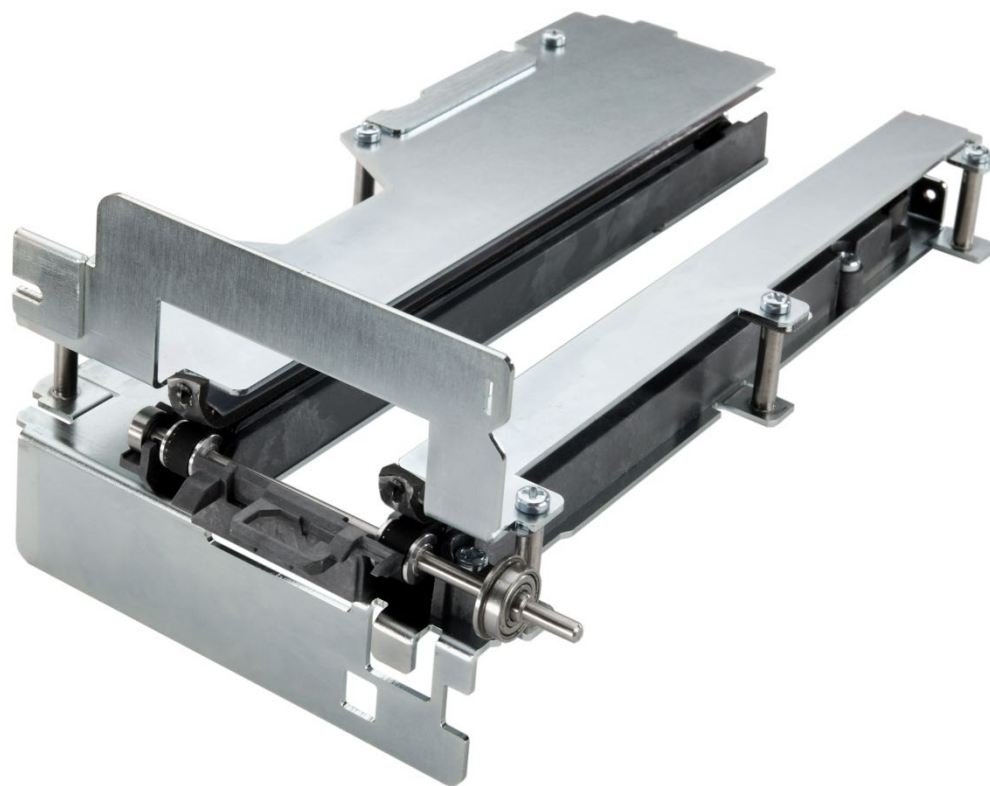
Parts & Projects

# ATM Stuffer Drive Assembly



## Manufacturing Processes & Capabilities:

- Blanking
- Forming
- Metal Finishing
- Riveting
- Hardware Insertion
- Multi-Part Assembly





# Medical Cart Tray



## Manufacturing Processes & Capabilities:

- Laser Cutting
- Blanking
- Piercing
- Machining
- Forming
- Hardware Insertion
- Welding
- Assembly
- Metal Finishing



# Military / Aerospace Chassis



## Manufacturing Processes & Capabilities:

- Turret Punching
- Piercing
- Forming
- Machining
- Forming
- Hardware Insertion
- Welding
- Assembly
- Metal Finishing





# Recreational Vehicle



## Manufacturing Processes & Capabilities:

- Blanking
- Short Run Tooling
- Forming
- Metal Finishing

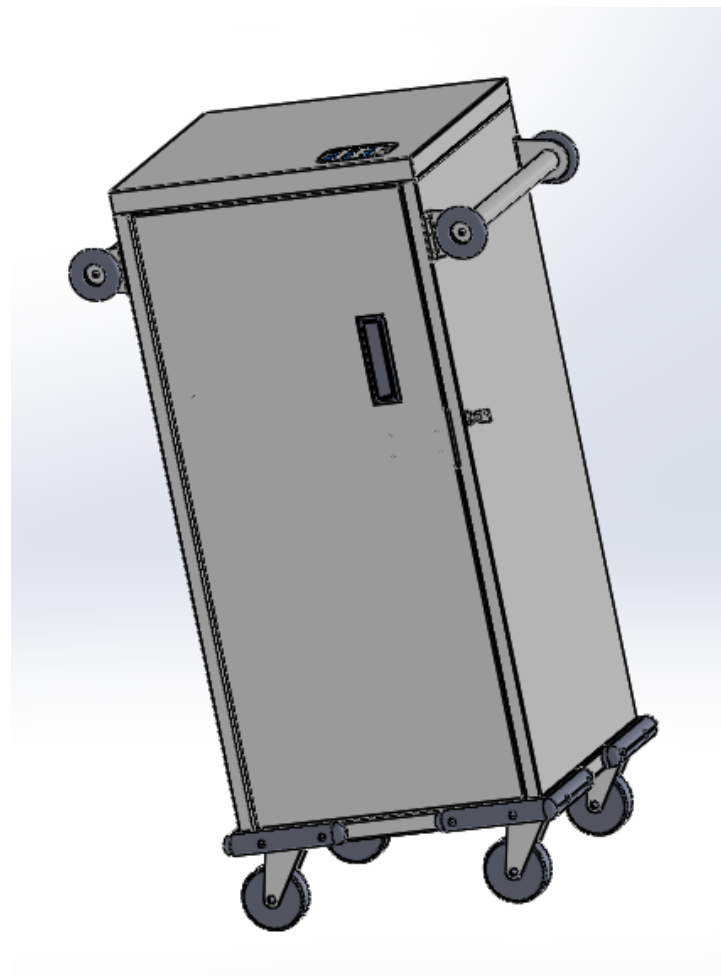


# Medical Transfer Cart



## Manufacturing Processes & Capabilities:

- Concurrent Engineering
- Prototyping
- Laser Cutting
- Stamping
- Forming
- Hardware Insertion
- Metal Finishing
- Assembly
- Supply Chain Management
- Configuration Management
- End-Customer Shipping

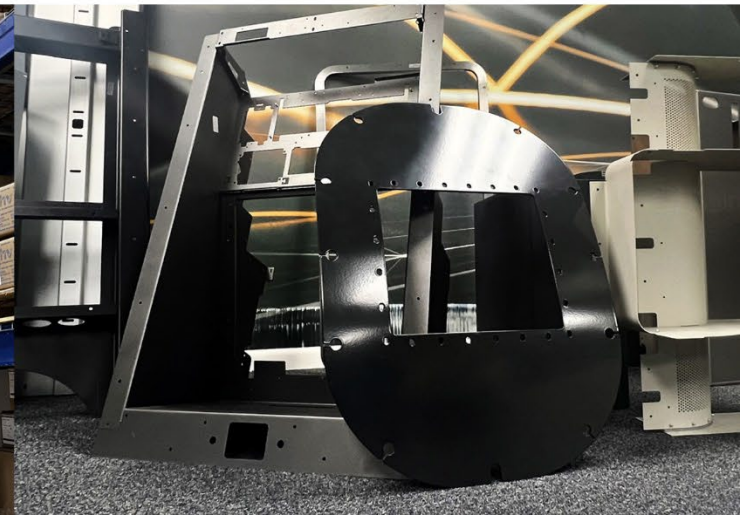
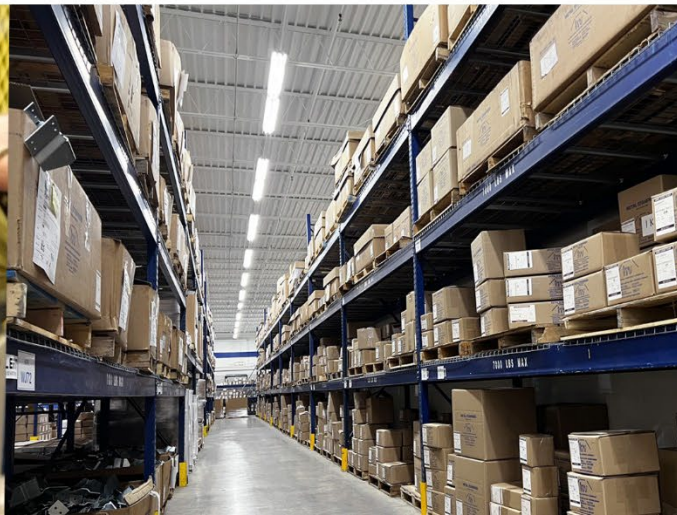




Precision sheet  
metal stamping,  
fabrication, and  
finishing services  
to match your  
project needs.

## HV Can Do More For You!

- 84 years of experience
- Global supplier for the most complex stamping & assemblies
- Stage tool expertise for short to medium run metal stampings
- Specialize in appearance-focused parts
- Extensive value-added capabilities
- Serve a wide range of markets
- Customer focus, knowledge & project management excellence
- Commitment to quality assurance and customer satisfaction
- Optimized manufacturing for repeatable, high-quality solutions
- State-of-the-art facilities, equipment, and dedicated personnel





## Resource Links:

[ISO 9001, AS9100 and ISO 14001 Certifications](#)

[Company Brochure](#)

[HV Team Directory](#)

[Sales Representative Directory](#)

[Customer TOC](#)



**Harvey Vogel Manufacturing Co.**

[sales@harveyvogel.com](mailto:sales@harveyvogel.com)

[harveyvogel.com](http://harveyvogel.com)

P: 651-739-7373